

ADJUSTABLE PRESSURE REDUCERS



**HiDP II
MODEL W6501**

WATERS MODEL W6501 HiDP II is an adjustable rod-in-tube pressure reducer designed for use in high quality water sampling streams operating at pressures ranging from 500-5000 psi. The HiDP II is ideal for centralized sampling systems, single point sample conditioners or similar applications where precise adjustment of a high pressure/low flow stream is required.

FEATURES

- STAINLESS CONSTRUCTION:** All wetted parts are 316 stainless steel to ensure high purity.
- IMPROVED ADJUSTABILITY:** Large diameter crank assisted handwheel requires less time and effort to cycle full open/closed than similar devices.
- EASY CLEAN OUT:** Incorporates a special blow-by step in the reduction rod which requires less rod retraction from the flow path in order to clear the unit of trapped solids.
- INTERCHANGEABILITY:** Fits exact space and mounting dimensions of similar devices. Plain ends standard; available with optional 1/4" compression fittings.
- FIXED ALIGNMENT:** High pressure sample tubing is captivated to ensure correct alignment with reduction rods. Tube-to-rod concentricity not affected by normal torquing of end fittings during installation.
- HEAVY DUTY:** Pressure retaining body constructed of extra heavy wall pipe. Drive rod assembly includes deep pitch Acme thread with greater surface area to resist galling.

SPECIFICATIONS

DESIGN PRESSURE	DESIGN TEMPERATURE	FLOW COEFFICIENT	MAXIMUM ΔP	CONNECTIONS	
				INLET	OUTLET
5000 PSI	300° F	$C_v = .0015$ to $.06$	5000 PSI	1/4" TUBE	1/4" TUBE

HOW TO ORDER

Model W6501: Compression Fitting End Connections

W65BKT: Mounting Bracket

SPECIFICATIONS

Valve Type: Variable stepped rod-in-tube, continuously adjustable over the full flow range. Rods can be fully retracted for cleaning.

P/T Rating: 5000 PSI @ 300°F

Flow Rates: Continuously adjustable over a Cv range of .0015 to .06

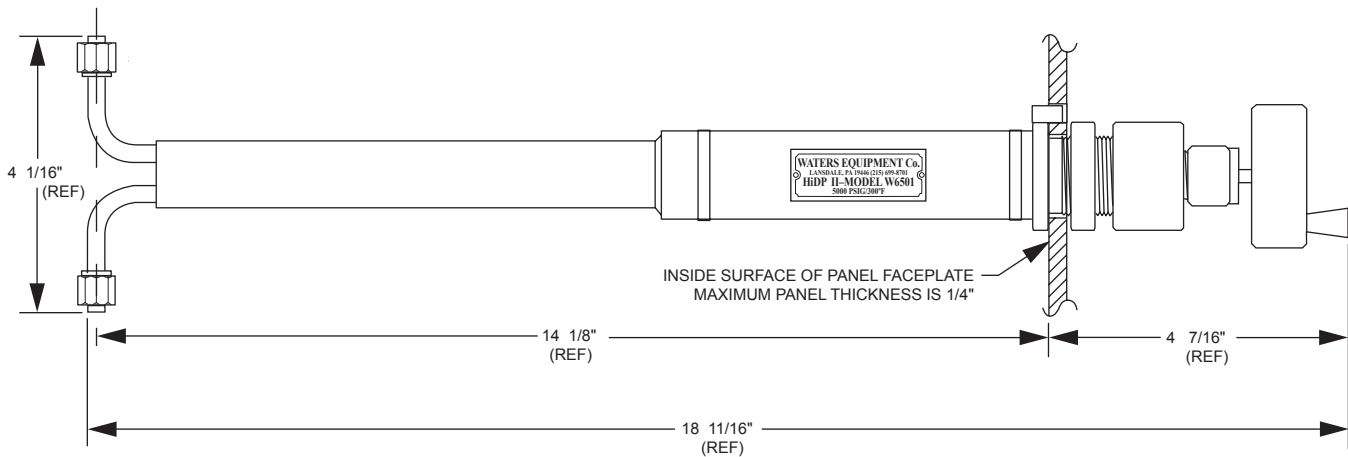
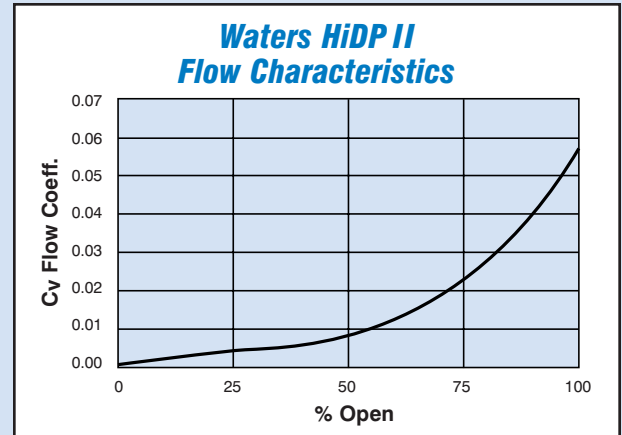
Connections: 1/4" Compression

Material: All wetted components 316SS

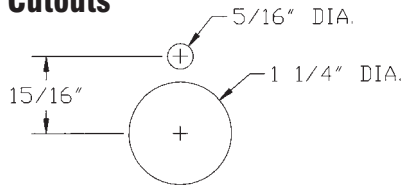
Mounting: Panel Mount
Bracket for surface mounting (optional)

Length: Approx. 18-3/4" end-to-end

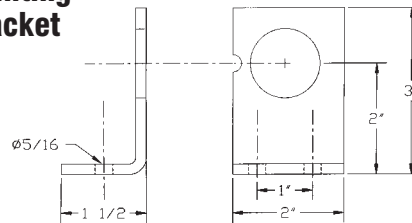
Weight: Approx. 2.1 lbs.



Panel Mount Cutouts



Mounting Bracket



The Waters Equipment expertise goes beyond Pressure Reducers. We also design and manufacture:
Total Plant Water and Steam Analysis • Sample Coolers • Sample Conditioning Modules • Refillable Resin Cartridges
Portable Samplers • Sample Sequencers • Temperature Control and Shut-Off Systems



P.O. Box 576, Lansdale, PA 19446
215-699-8700 • Toll-Free: 1-888-363-7886 • Fax: 215-699-8795
Web Site: <http://www.watersequipment.com>
E-mail: sample@watersequipment.com

SOLD BY: